

# CONF700

## CONFIGURATION INTERFACE

**CONF700** is a windows based configurator for the LC700. It is easy to use and learn. The user can define the hardware for the LC700 system, create the control logic through the Ladder Logic language, create User-Functions and test the application.

The program can be divided in as many logic networks that the memory can hold. It is possible to change the network execution order as well as to temporarily disable its execution for analysis purpose.

Using the on-line connection we can test and optimize the application.

### *Overview of CONF700*

**CONF700** is dedicated software for programming the LC700 hardware, designing your application logic with ladder elements or function blocks. It also enables the user to make optimizations. It provides all features you need to prepare your plant strategy using the classic ladder logic network and/or combining relays, coils, user functions and a large variety of built-in functions.

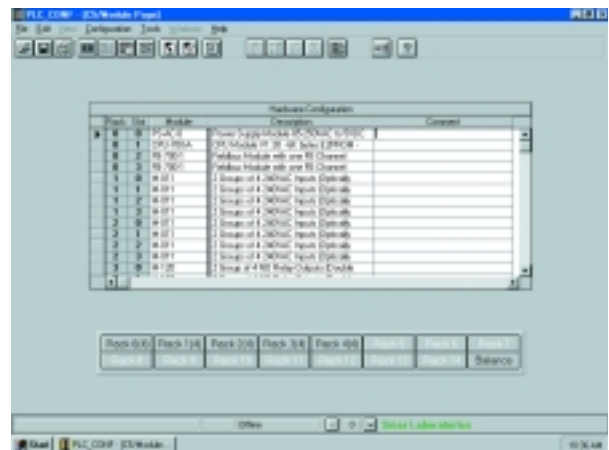
Along with its special capabilities, **CONF700** has powerful features for creating user-functions and editing the ladder network by the "Click-and-Write technique." User-Functions are Boolean equations prepared by the user to be plugged into the ladder logic network. It is editable through our exclusive Click-and-Write technique. With the Click-and-Write technique, the user can write a full Boolean equation using all of the resources of the LC700 without touching the keyboard!

In addition, the user can create Ladder Networks as many as the memory space allows and can change the execution order at any time. Each Network is composed of a set of 15X16 cells. The cells can represent lines, Relays, Coils, User-Functions, Built-in-Functions, Jumpers and/or Returns.

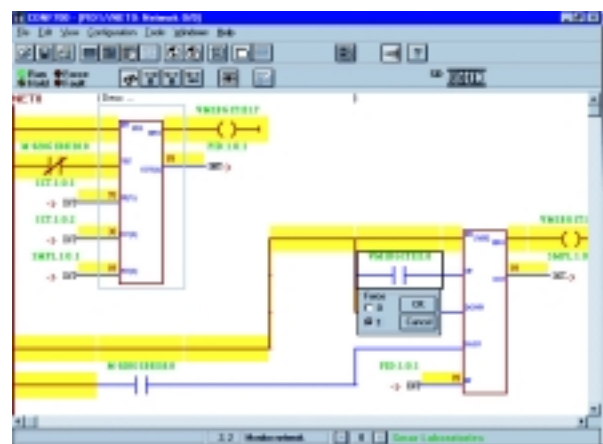
Since CONF700 is a windows based configurator, you will find out yourself that it is easy to operate. You can easily obtain a report about your configuration by simply using the printing command.

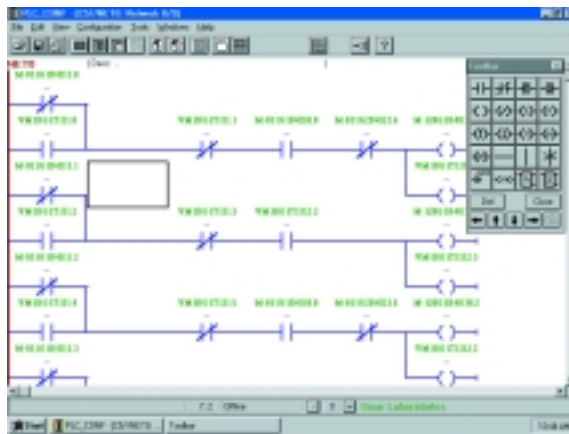
Furthermore, CONF700 has on-line features to download, upload, monitor, and to edit on-line. A computer link using MODBUS protocol can interconnect up to 31 PLC's. To expand the I/O capability, you can also use a remote I/O Module to bring signals from remote locations or use the Local I/O Expansion with flat cables. Once the modules and the computer are physically connected, you can easily set the communication on CONF700.

*Hardware Configuration.*



*Optimization.*





*Ladder Network.*

*Documentation.*



**CONF700 basic features:**

- Ladder Logic language IEC-1131-3
- Easy to learn and use Windows™ Program
- Automatic Memory allocation for points
- Automatic default Tag generation
- Ready for documentation
- Mapping address table to integrate the application into a MMI